

BUMPSTER

by ORIGAUDIO™

Instruction Manual

Bumpster Bluetooth wireless speaker (for smart phones; with NFC pairing functionality)

Product Features

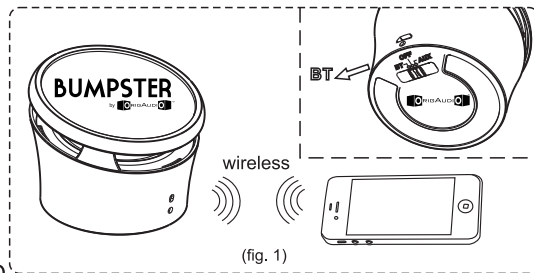
- Bluetooth v3.0 wireless connection up to 10M
- NFC pairing function
- Superb sounding portable speaker
- Built-in 3W amplified speaker and bass enhancer
- Built-in rechargeable battery
- Speaker phone call-choice functionality
- Simplistic portable design
- AUX 3.5 mm audio input
- Compatible with smart phones and other multimedia player devices



This speaker is compliant with Bluetooth v3.0 wireless standard, and powered by a built-in battery that is rechargeable by USB port. The simple design is sleek, stylish, and portable. It is the ideal audio speaker to pair with smartphones.

Charging The Speaker

As shown (fig. 1), connect the micro-USB port with the charging cable and its USB plug with the ⚡ marking to a USB port with power on the other end. A red LED will light up in the back to indicate charging. When the speaker is fully charged (approx. 1.5 hours for a full recharge), the back LED will turn blue.



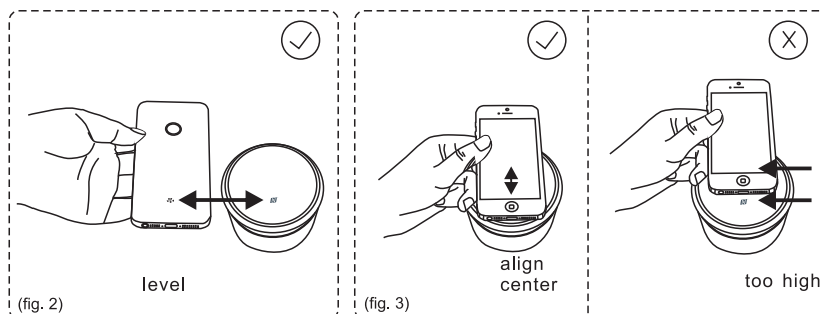
NFC pairing with your phone

Turn on the bottom switch to [BT] to switch on the speaker, and then if your smart phone is NFC enabled,

- Locate the NFC antenna spot on your smart phone (fig.2)
- NFC antenna is at the top of the BUMPSTER speaker (fig.2)
- Align NFC antennas as close as possible you will hear a 'cling' sound when they are matched (fig.3)
- Wait for a few seconds and you will hear a "Bloop" sound from the speaker and its blue LED will illuminate continuously. The pairing is now complete.

Note

The N-Mark is a registered trademark of NFC Forum Inc. in the United States and in other countries. Some phone models are NFC enabled, but their NFC apps were not built-in. For these models, you will need to install an NFC app and activate the NFC function on your phone.



A) Move the slide switch to [BT] to switch on the speaker, power is auto ON within 3 seconds and LED indicates blue on front. For first time use, the blue LED will be flashing fast (8 times every sec.) to show it is ready for pairing. Browse your smart

phone Bluetooth device list, find and select the one named "OrigAudio-D" to confirm pairing on your smart phone. You will hear a beep tone on the speaker which is sent from your phone, and then the speaker's blue LED flashes steadily (1.5 times every sec.). Pairing connection is now complete.

B) When you need to disconnect the speaker, you should first switch off Bluetooth functionality on your smart phone, the speaker's blue LED will flash slowly (1 time every sec.). Then you switch to [OFF] (slide switch to middle) the speaker, the pairing memory will then be kept there. Next time, when you switch [BT] to turn ON the speaker will automatically connect to your smart phone again and the blue LED will light continuously (when your smart phone's Bluetooth function is turned ON and nearby <5M).

C) If you need to pair the speaker with a new smart phone, first switch off Bluetooth function on your old smartphone. Then power on your new smart phone's Bluetooth function. Next, switch OFF and switch to [BT] to power on the speaker until the speakers' blue LED will be flashing fast again (8 times every sec.), and then you repeat steps as in above paragraph 'A'.

Call-Choice function

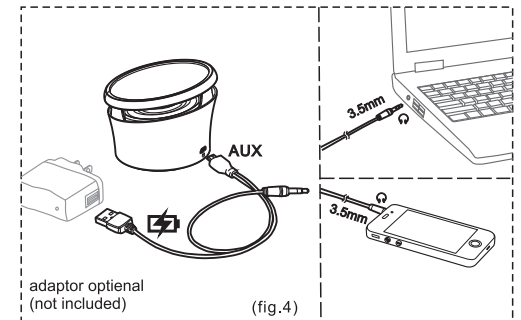
When the speaker is connected to your smartphone (the blue LED will light continuously) and you receive a phone call, you can operate your phone to answer the call and use the speakerphone, or you can choose to answer the call on your phone.

How to Use / Controls

After you flip the switch to [BT] to turn the speaker ON, pair your phone to the speaker to pick songs, play/pause songs, adjust speaker volume, etc.

If the battery power is low, it will emit beeping sound during playback (the LED will flash RED and BLUE quickly – 8 times every second, RED light interval every 4 seconds). Charge the speaker as mentioned in the above section – music will play while the speaker is charging.

Switch the button to the [AUX] position. Then, use the 3.5mm audio cable to connect smartphones and other multimedia devices to play music. (You will need to operate the smartphone to resume playing music when you disconnect the AUX cable and switch to wirelessly playing music)



Dimensions	W 80mm x D 80mm x H 63mm
Product Weight	180g
Bluetooth Wireless Connection	v3.0 + EDR; class II; typ. 8M visible distance; max 10M
Support Multiple Pairing	Up to 4 devices**
Driver	Dia. 50mm
Frequency Response (0 dB at 1 KHz)	100Hz ~ 20,000Hz
Amplifier Output	2.2 W (THD=10%, 1KHz@0dB)
Amplifier Max Output	2.7 W (1KHz@0dB)
Signal to Noise Ratio	>60dB
Operation Voltage	Min 3V, max 4.2V DC
Built-in 3.7V Li-Polymer rechargeable battery	
Battery Charging Voltage	typ. 5V; max 5.5V DC (via USB port)
Battery Charging Current	500mA max
Battery Charging Time	1.5 hours
Drain Current (power on, no input)	20mA
Playback Time	~10 hours (fully charged, volume @ 33%)
Standby Time	Up to 18 hours

**SEE MORE AT:
WWW.ORIGAUDIO.COM**