

Display Set-Up

Step 1

Open the Leg Extension Clips (bottom clip only on Front Legs) and extend the Front and Back Legs to the desired height. Firmly close the Leg Extension Clips.



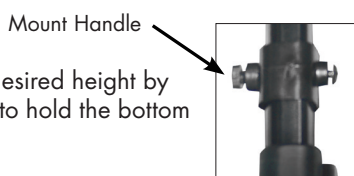
Step 2

Stand the unit upright and spread the Front Legs while pushing the Back Leg backwards. (The Front Legs have Graphic Shelf Mounts while the Back Leg does not.)



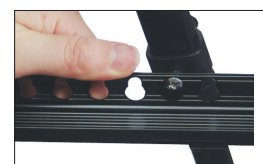
Step 3

Adjust the Mount Handles to the desired height by twisting to tighten and un-tighten, to hold the bottom of the Graphic in place.



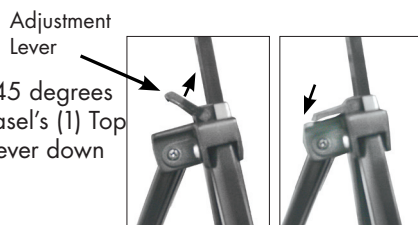
Step 4

Slip the Easel's (1) Mount Screws into the Mounting Holes on the Graphic Shelf (2) by inserting the Mount Screw into the large part of the hole.



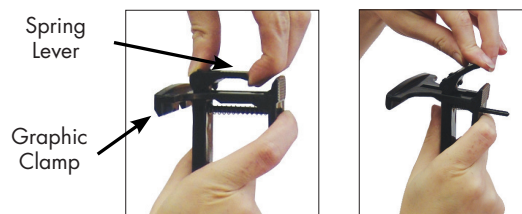
Step 5

Lift the Adjustment Lever to 45 degrees to adjust the height of the Easel's (1) Top Pole. Press the Adjustment Lever down to secure in place.



Step 6

Rest the bottom of the Graphic on the Graphic Shelf (2) and lift the Spring Lever. Adjust the Graphic Clamp by moving it forward, to firmly hold the top of the Graphic in place. Lower the Spring Lever to secure.



Storage & Care

Place all product parts into Carry Case and store in a cool dry location.



To clean, wipe with damp cloth.